

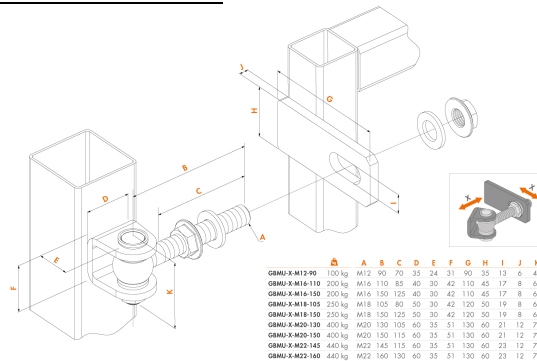
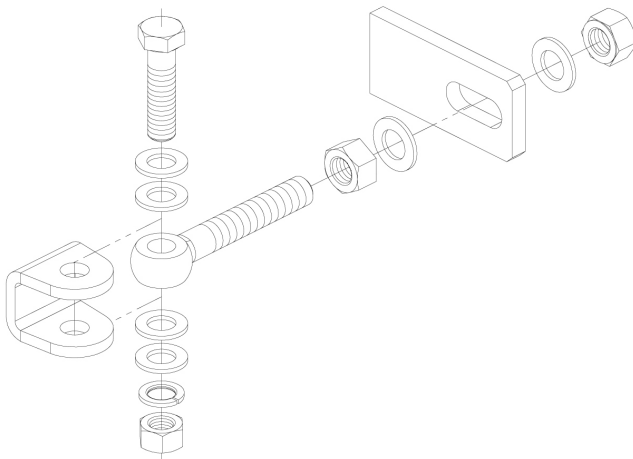
3-WAY ADJUSTABLE 180° HINGE

Item No. GBMU-

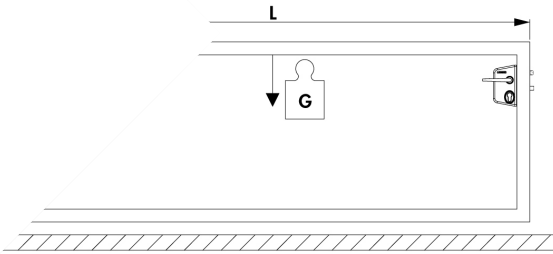


3-way adjustable hot-dip galvanized 180° hinge. Depth and spacing between gate and post are adjustable after installation. The welding parts are available in black steel or zinc plated.

- 180° opening and closing angle
- Eyebolt, bolt & nut, hot-dip galvanized
- U-shaped ear plate and groove plate in black steel to weld on
- Available in M12, M16, M18, M20, M22
- Packed per 50 pieces or per pair



STAY INFORMED



| | | | | |
|----------|---|---|--|---|
| A | Min. afstand tussen de scharnieren in mm | Minimum distance between the hinges in mm | Entraxe minimum entre les charnières en mm | Min. Abstand zwischen den Torbändern in mm |
| L | Lengte van de poort in mm | Gate length in mm | Longueur du portail en mm | Torlänge in mm |
| G | Maximum-gewicht van de poort in kilogram (kg) | Maximum gate weight in kilogram (kg) | Poids maximal du portail en kilogrammes (kg) | Maximum-gewicht des Tores in Kilogramm (kg) |

GBMUM16

| | | | | |
|-----------------------------|-------------------------|----------------------------------|------------------------|----------------|
| Max. trekkracht / scharnier | Max. pull power / hinge | Force de traction max./charnière | Max. Zugkraft/ Torband | 60000 N |
| Veiligheidsfactor | Safety Factor | Facteur de sécurité | Sicherheitsfaktor | 6 |

| | | L | | | | | | | | |
|---|------|------|------|------|------|------|------|------|------|------|
| | | 750 | 1000 | 1250 | 1500 | 2000 | 2500 | 3000 | 3500 | 4000 |
| A | 500 | 659 | 464 | 348 | 270 | 173 | 114 | 76 | 48 | 27 |
| | 750 | 1048 | 756 | 581 | 464 | 319 | 231 | 173 | 131 | 100 |
| | 1000 | 1189 | 1048 | 814 | 659 | 464 | 348 | 270 | 214 | 173 |
| | 1250 | 1189 | 1189 | 1048 | 853 | 610 | 464 | 367 | 298 | 246 |
| | 1500 | 1189 | 1189 | 1189 | 1048 | 756 | 581 | 464 | 381 | 319 |
| | 1750 | 1189 | 1189 | 1189 | 1189 | 902 | 698 | 562 | 464 | 391 |
| | 2000 | 1189 | 1189 | 1189 | 1189 | 1048 | 814 | 659 | 548 | 464 |
| | 2500 | 1189 | 1189 | 1189 | 1189 | 1189 | 1048 | 853 | 714 | 610 |
| | 3000 | 1189 | 1189 | 1189 | 1189 | 1189 | 1189 | 1048 | 881 | 756 |
| | 4000 | 1189 | 1189 | 1189 | 1189 | 1189 | 1189 | 1189 | 1048 | 902 |

GBMUM18

| | | | | |
|-----------------------------|-------------------------|----------------------------------|------------------------|----------------|
| Max. trekkracht / scharnier | Max. pull power / hinge | Force de traction max./charnière | Max. Zugkraft/ Torband | 60000 N |
| Veiligheidsfactor | Safety Factor | Facteur de sécurité | Sicherheitsfaktor | 6 |

| | | L | | | | | | | | |
|---|------|------|------|------|------|------|------|------|------|------|
| | | 750 | 1000 | 1250 | 1500 | 2000 | 2500 | 3000 | 3500 | 4000 |
| A | 500 | 1129 | 796 | 596 | 463 | 296 | 196 | 129 | 82 | 46 |
| | 750 | 1796 | 1296 | 996 | 796 | 546 | 396 | 296 | 225 | 171 |
| | 1000 | 2039 | 1796 | 1396 | 1129 | 796 | 596 | 463 | 368 | 296 |
| | 1250 | 2039 | 2039 | 1796 | 1463 | 1046 | 796 | 629 | 510 | 421 |
| | 1500 | 2039 | 2039 | 2039 | 1796 | 1296 | 996 | 796 | 653 | 546 |
| | 1750 | 2039 | 2039 | 2039 | 2039 | 1546 | 1196 | 963 | 796 | 671 |
| | 2000 | 2039 | 2039 | 2039 | 2039 | 1796 | 1396 | 1129 | 939 | 796 |
| | 2500 | 2039 | 2039 | 2039 | 2039 | 2039 | 1796 | 1463 | 1225 | 1046 |
| | 3000 | 2039 | 2039 | 2039 | 2039 | 2039 | 2039 | 1796 | 1510 | 1296 |
| | 4000 | 2039 | 2039 | 2039 | 2039 | 2039 | 2039 | 2039 | 1796 | 1546 |

GBMUM20

| | | | | |
|-----------------------------|-------------------------|----------------------------------|------------------------|----------------|
| Max. trekkracht / scharnier | Max. pull power / hinge | Force de traction max./charnière | Max. Zugkraft/ Torband | 60000 N |
| Veiligheidsfactor | Safety Factor | Facteur de sécurité | Sicherheitsfaktor | 6 |

| | | L | | | | | | | | |
|---|------|------|------|------|------|------|------|------|------|------|
| | | 750 | 1000 | 1250 | 1500 | 2000 | 2500 | 3000 | 3500 | 4000 |
| A | 500 | 1129 | 796 | 596 | 463 | 296 | 196 | 129 | 82 | 46 |
| | 750 | 1796 | 1296 | 996 | 796 | 546 | 396 | 296 | 225 | 171 |
| | 1000 | 2039 | 1796 | 1396 | 1129 | 796 | 596 | 463 | 368 | 296 |
| | 1250 | 2039 | 2039 | 1796 | 1463 | 1046 | 796 | 629 | 510 | 421 |
| | 1500 | 2039 | 2039 | 2039 | 1796 | 1296 | 996 | 796 | 653 | 546 |
| | 1750 | 2039 | 2039 | 2039 | 2039 | 1546 | 1196 | 963 | 796 | 671 |
| | 2000 | 2039 | 2039 | 2039 | 2039 | 1796 | 1396 | 1129 | 939 | 796 |
| | 2500 | 2039 | 2039 | 2039 | 2039 | 2039 | 1796 | 1463 | 1225 | 1046 |
| | 3000 | 2039 | 2039 | 2039 | 2039 | 2039 | 2039 | 1796 | 1510 | 1296 |
| | 4000 | 2039 | 2039 | 2039 | 2039 | 2039 | 2039 | 2039 | 1796 | 1546 |

STAY INFORMED

| | | | | | | |
|--|------|------|------|------|------|------|
| | 1770 | 1270 | 770 | 770 | 833 | 340 |
| | 2039 | 1546 | 1196 | 963 | 796 | 671 |
| | 2039 | 1796 | 1396 | 1129 | 939 | 796 |
| | 2039 | 2039 | 1796 | 1463 | 1225 | 1046 |
| | 2039 | 2039 | 2039 | 1796 | 1510 | 1296 |
| | 2039 | 2039 | 2039 | 2039 | 1796 | 1546 |
| | 2039 | 2039 | 2039 | 2039 | 2039 | 1796 |

G

M22

| | | | | |
|-------------------------------|------------------------------|--|---------------------------|----------------|
| Max. rekkracht / scharnier | Max. pull power/ hinge | Force de traction max./charnière | Max. Zugkraft/ Torband | 65000 N |
| Veiligheids- factor | Safety Factor | Facteur de sécurité | Sicherheits- faktor | 6 |

L

| | | | | | | | | | | |
|----------|------|------|------|------|------|------|------|------|------|------|
| | 750 | 1000 | 1250 | 1500 | 2000 | 2500 | 3000 | 3500 | 4000 | |
| A | 500 | 1224 | 862 | 646 | 501 | 321 | 212 | 140 | 89 | 50 |
| | 750 | 1946 | 1404 | 1079 | 862 | 592 | 429 | 321 | 243 | 185 |
| | 1000 | 2209 | 1946 | 1512 | 1224 | 862 | 646 | 501 | 398 | 321 |
| | 1250 | 2209 | 2209 | 1946 | 1585 | 1133 | 862 | 682 | 553 | 456 |
| | 1500 | 2209 | 2209 | 2209 | 1946 | 1404 | 1079 | 862 | 708 | 592 |
| | 1750 | 2209 | 2209 | 2209 | 2209 | 1675 | 1296 | 1043 | 862 | 727 |
| | 2000 | 2209 | 2209 | 2209 | 2209 | 1946 | 1512 | 1224 | 1017 | 862 |
| | 2500 | 2209 | 2209 | 2209 | 2209 | 2209 | 1946 | 1585 | 1327 | 1133 |
| | 3000 | 2209 | 2209 | 2209 | 2209 | 2209 | 2209 | 1946 | 1636 | 1404 |
| | 3500 | 2209 | 2209 | 2209 | 2209 | 2209 | 2209 | 2209 | 1946 | 1675 |
| | 4000 | 2209 | 2209 | 2209 | 2209 | 2209 | 2209 | 2209 | 2209 | 1946 |

G

STAY INFORMED